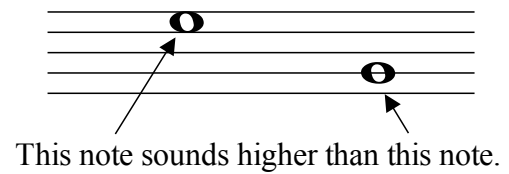
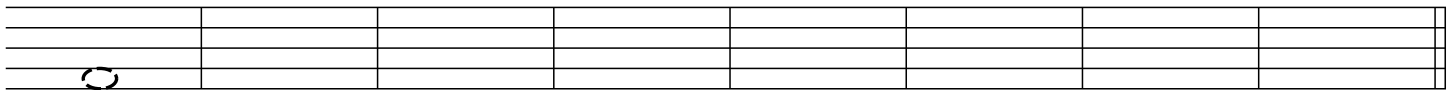


The Staff - High and Low

Notes that are higher on the staff have a higher sound or **pitch**.

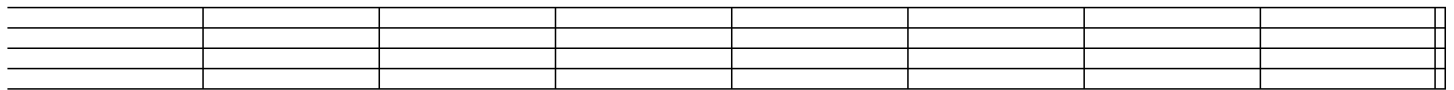


1. Draw a note on the indicated line or space, then circle the highest note you drew on the staff.



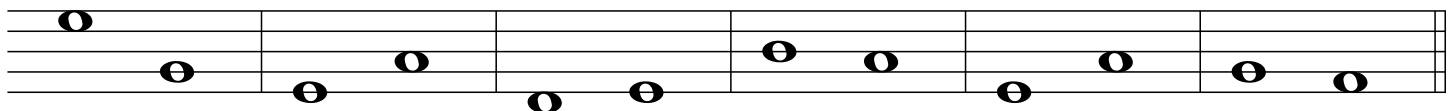
Space 1 Space 4 Line 3 Line 4 Space 1 Space 3 Line 5 Line 2

2. Draw a note on the indicated line or space, then circle the lowest note you drew on the staff.

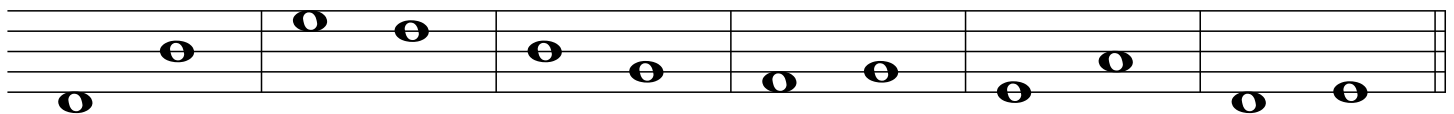


Line 5 Space 3 Line 1 Space 1 Space 4 Line 3 Line 2 Space 2

3. Circle the higher note in each pair.



4. Circle the lower note in each pair.



5. By using H (higher) and L (lower) indicate whether the first note of each pair sounds higher or lower than the second note.

